

Inspiring our tamariki to lead our community into a stronger future

Waituna Creek Kura

Newsletter #17

Monday 17th October 2022

Kia Ora,

Welcome back to Term 4. My favourite term as it is getting warmer, the spring blossom is out and the vegetable garden is ready for planting. This is always a super busy term with the end of year assembly the culmination of the year.

I hope everyone had a relaxing break, I certainly did. In between schoolwork and gardening I managed to visit my youngest son, Mike and catch some gurnard and scallops. Fishing is always a wonderful way to spend time with my son.

The Better Start Literacy Approach Rochelle and I introduced to Ruru room Year 1's has continued to show the excellent progress the students are making using the evidence-based literacy instruction developed by the University of Canterbury.

Please ensure you have returned the calendar order form by tomorrow so the calendars will be back before the end of the term.

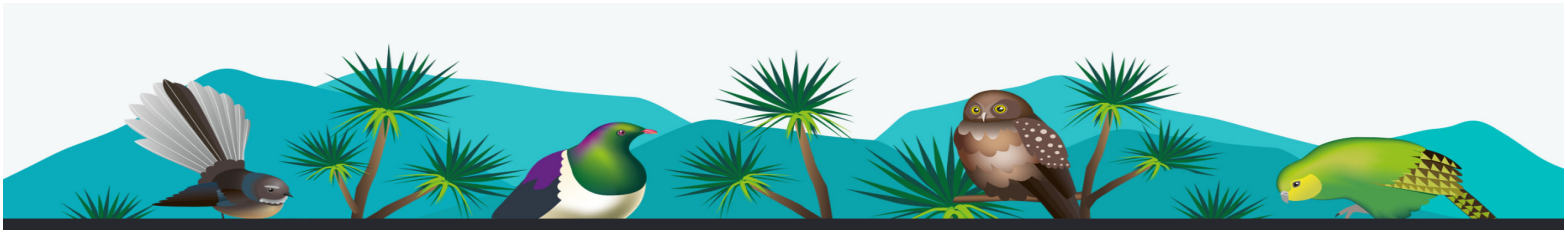
On Wednesday we planned to visit Waihao Marae with St Patrick's and Makikihi Schools however this has been postponed. As this is an important part of Waituna Creek's curriculum developing our students' concept of Manakitanga and our local history we are looking forward to the new date for us to attend.

Next week begins with the Labour Day holiday and then on Thursday Waituna will be joining other schools in Shake Out - the nationwide earthquake drill. Friday will be our Pet Day. Please read all the newsletters you will receive over the next few days so you know what is happening throughout the day. This is a much loved event and requires us all to work together to ensure success.

After Labour Day we will begin planting the school vegetable gardens. I have been collecting the Little Plants from New World from friends for us to grow. We are going to plant some giant pumpkin seeds from Jennifer and Eugene and hopefully we will get enough rain over the Christmas holidays to keep it growing.

Please remember sun hats are compulsory for Term 4 and the pie warmer will no longer be operating until Term 2 next year.

Bronwyn



Inspiring our tamariki to lead our community into a stronger future

IMPORTANT DATES

Some of these dates are subject to change. Keep an eye out on skool loop notices, calendar and emails.

| Term 4 | |
|-------------------------|---|
| Monday 17th October | Start of Term 4 |
| Tuesday 18th October | Calendar orders deadline |
| Wednesday 19th October | Morven Marae Visit (postponed - date to be confirmed) |
| Monday 24th October | Labour Day Public Holiday |
| Tuesday 25th October | Subway |
| Thursday 27th October | Shake Out - 9:30 am |
| Friday 28th October | Pet Day |
| Saturday 5th November | Southern A & P Show |
| Tuesday 8th November | Rural Schools Athletics Day |
| Tuesday 8th November | No Subway |
| Tuesday 8th November | Board of Trustee Meeting - 7pm |
| Friday 11th November | South Canterbury Anniversary Day |
| Tuesday 15th November | Waimate Primary Schools Athletic Sports (pp 17th Nov) |
| Wednesday 16th November | Trip to Timaru Museum & Caroline Bay |
| Tuesday 22nd November | Subway |
| Tuesday 6th December | Subway |
| Tuesday 6th December | Board of Trustee Meeting - 7pm |
| Thursday 8th December | Totara Estate Visit |
| Thursday 15th December | Prizegiving - 6pm |
| Friday 16th December | End of Term 4 |

TIME TO UPDATE!

Our school uses **The Skool Loop App** to communicate and send important information. **Please check your app store to ensure your phone is running the latest version and receiving all school news.**

The app undergoes regular maintenance and updates throughout the year. **Check your app store to ensure your phone is running the latest version!**